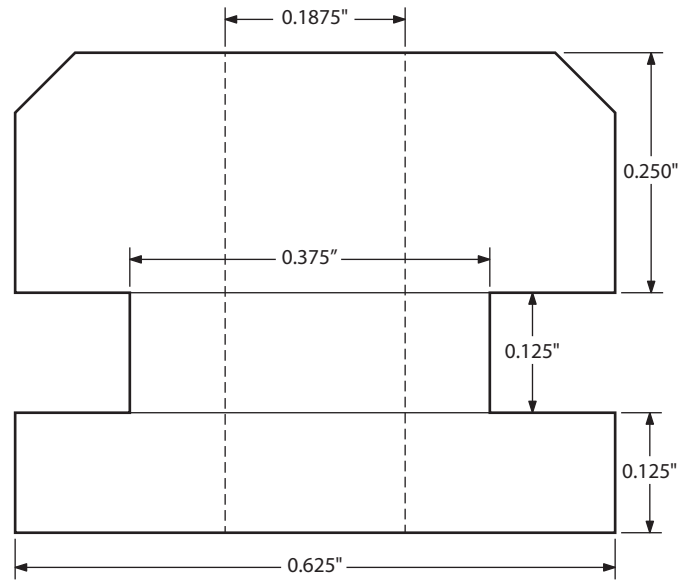


# P6000 Rail Buttons

Tail buttons for the Unistrut P6000 aluminum channel

John Coker  
john@jcsww.com



Overall diameter: 5/8" (0.625")  
Overall height: 1/2" (0.500")  
Slot for rail lips: 1/8" (0.125") square  
Screw hole: 3/16" (0.1875") diameter